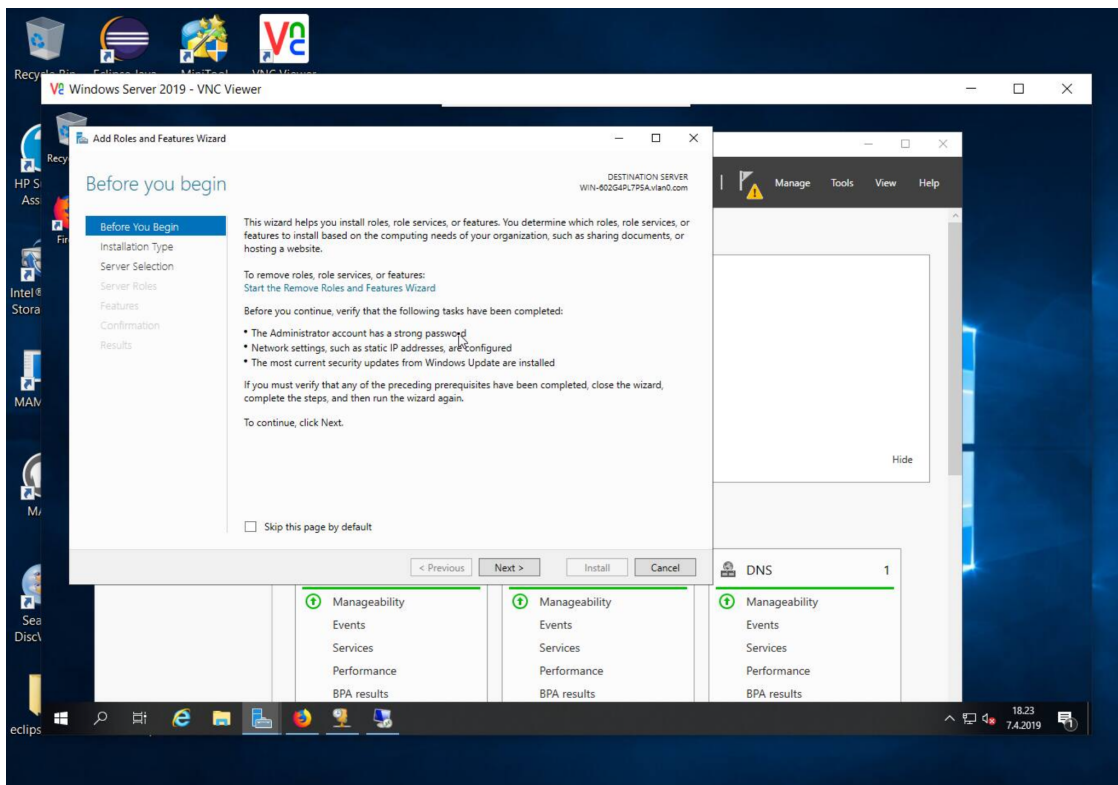
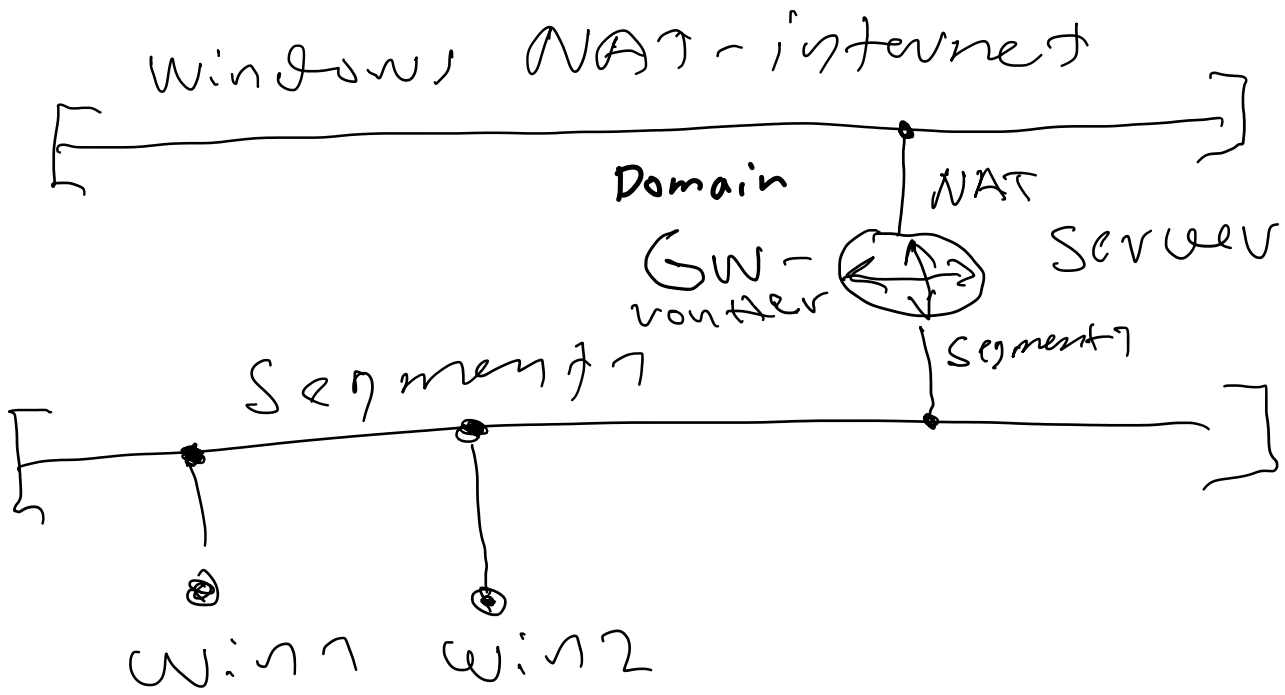
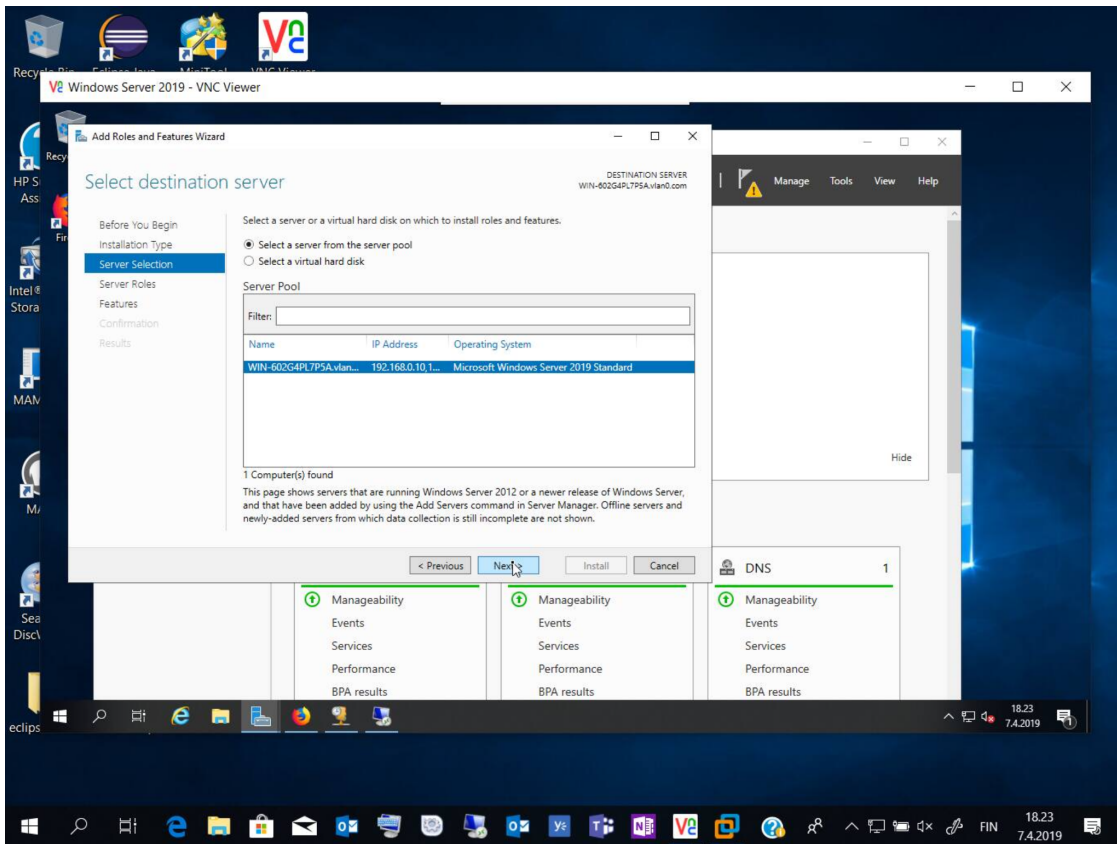
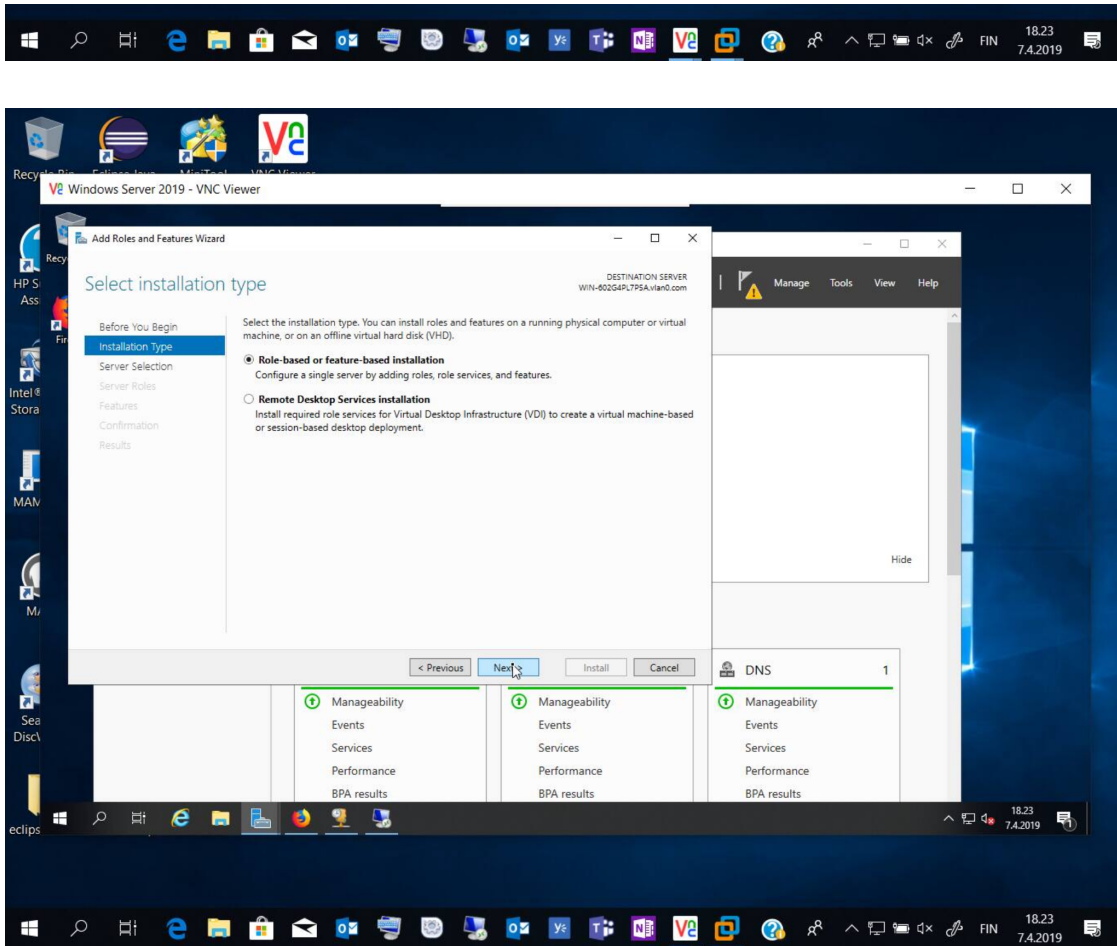
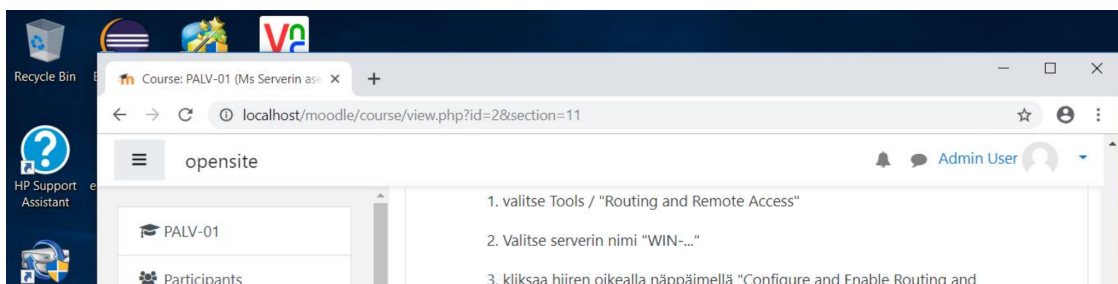
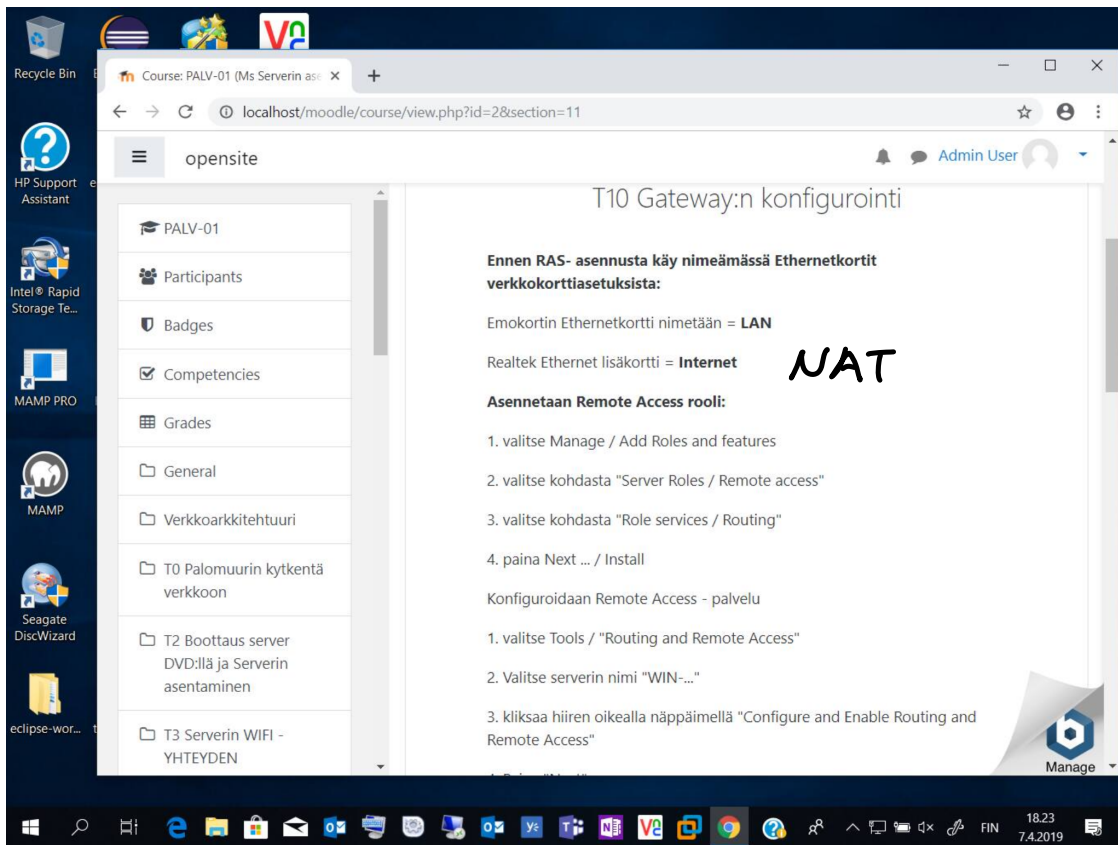
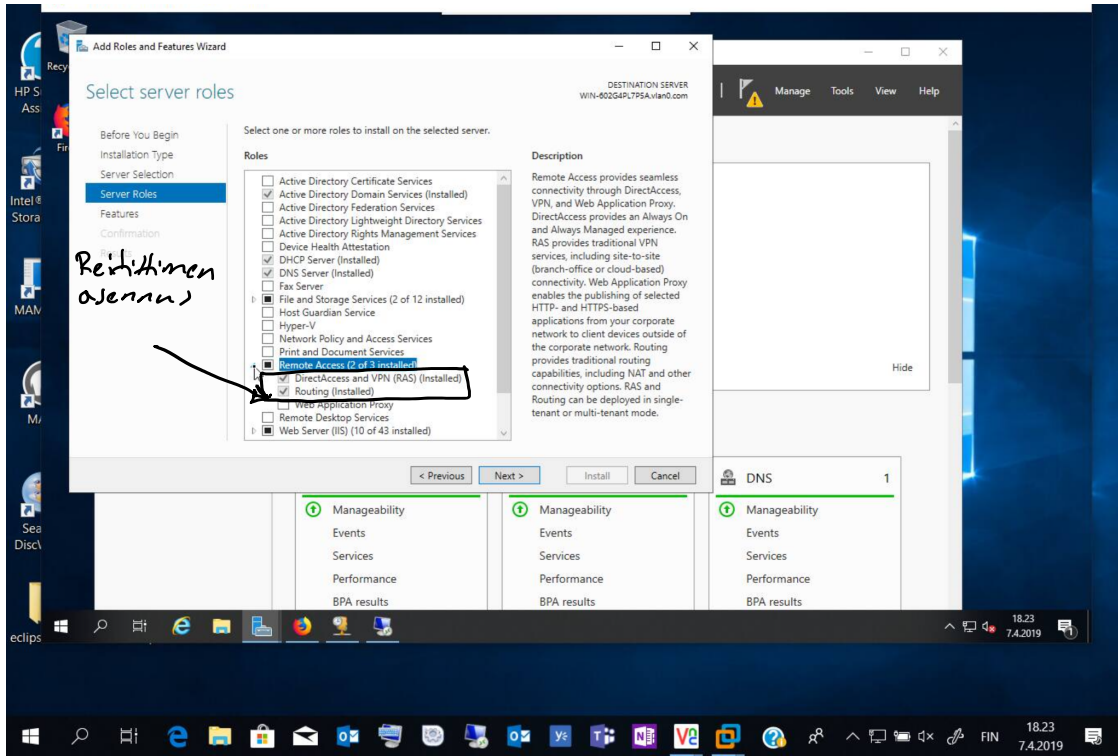


Gateway konfigurointi

sunnuntai 7. huhtikuuta 2019 19.03







Remote Access"

4. Paina "Next"
5. valitse: "Network address translation NAT"
6. valitse kohdasta "Use this public interface to connect to Internet" = Realtek tai ASIX
(valitse verkkokortti joka kytkeytyy internettiin: koulun koneilla Realtec)
7. Paina Next
8. Paina Finish
9. Avaa Tools / Routing and remote Access
10. Valitse IPv4
11. valitse NAT
12. Tuplakisaa Internet Ethernet- korttia (nimellä esim. Internet)
13. valitse kohdasta "Interface type" = Public Interface connected to the

Windows Server 2019 - VNC Viewer

Server Manager Dashboard

WELCOME TO SERVER MANAGER

1. Configure this local server
2. Add roles and features
3. Add other servers to manage
4. Create a server group
5. Configure services

Reiittimen konfigurointi

ROLES AND SERVER GROUPS

Role	Count
AD DS	1
DHCP	1
DNS	1

Routing and Remote Access

Windows Server 2019 - VNC Viewer

Routing and Remote Access

Server Status

WIM_602G4PL7PSA (local)

Hiiven oikealla näppäimellä

Welcome to Routing and Remote Access

Routing and Remote Access provides secure remote access to private networks. Use Routing and remote access to configure the following:

- A secure connection between two private networks.
- A Virtual Private Network (VPN) gateway.
- A Dial-up remote access server.
- Network address translation (NAT).
- LAN routing.
- A basic firewall.

To add a Routing and Remote Access server, on the Action menu, click Add Server.

