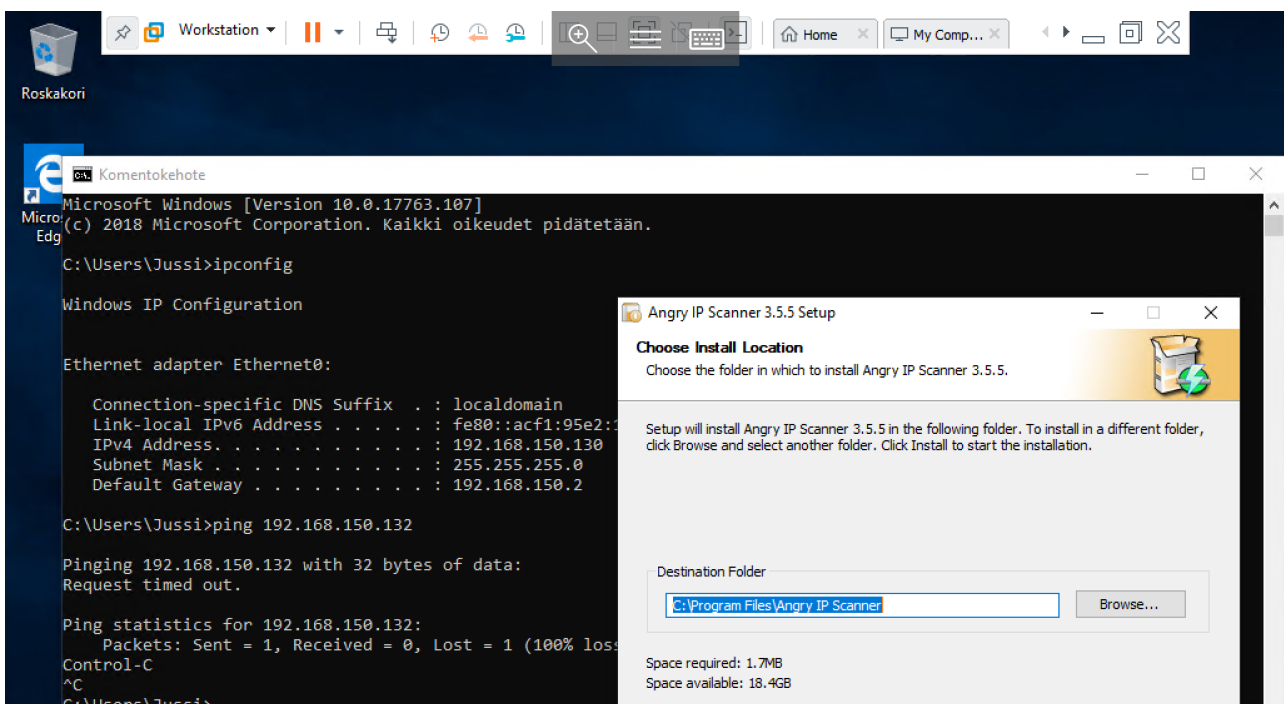
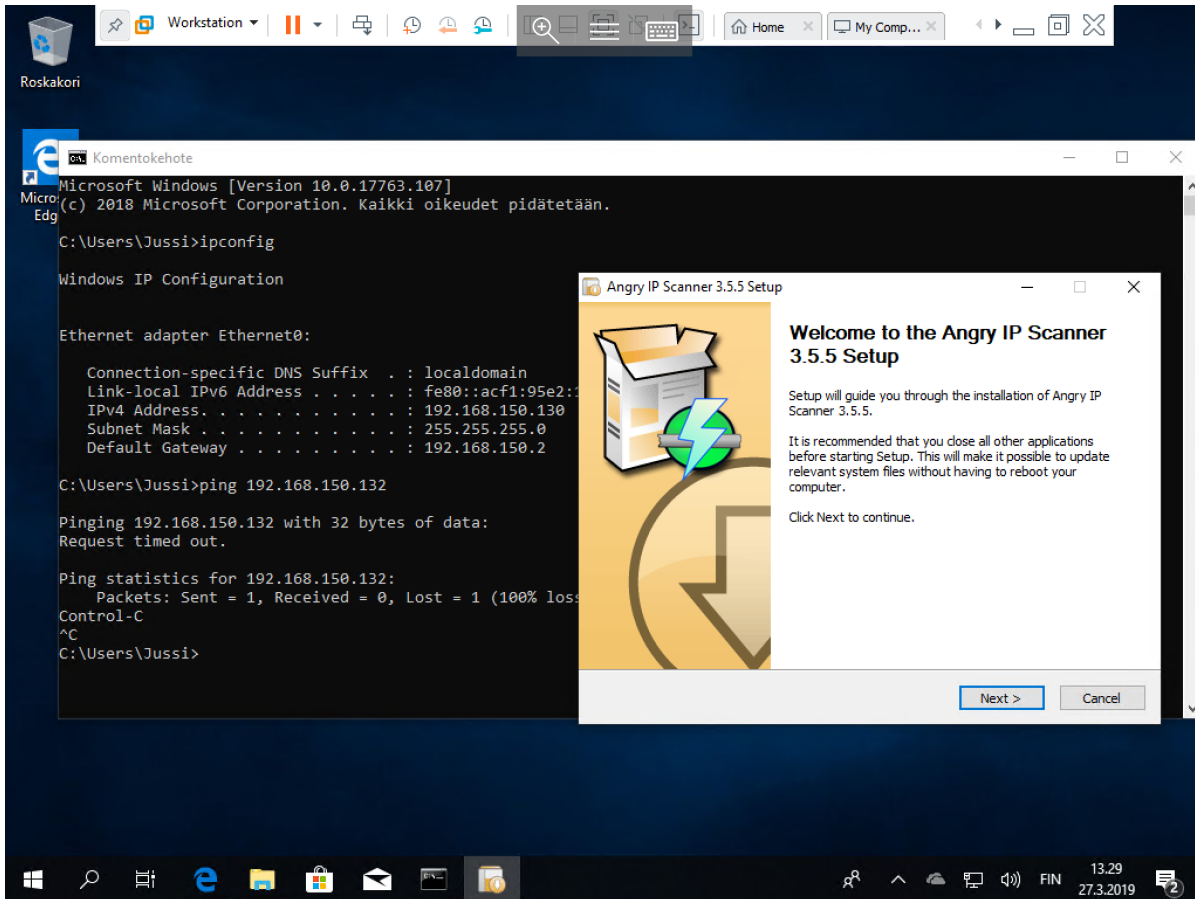
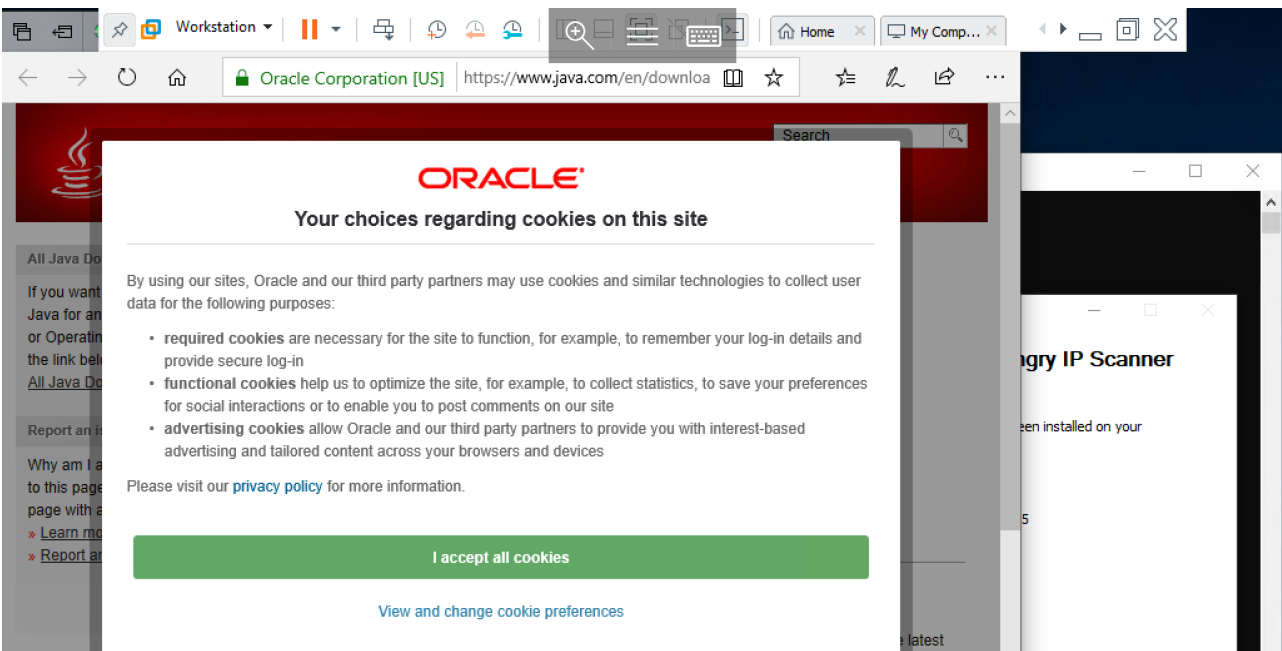
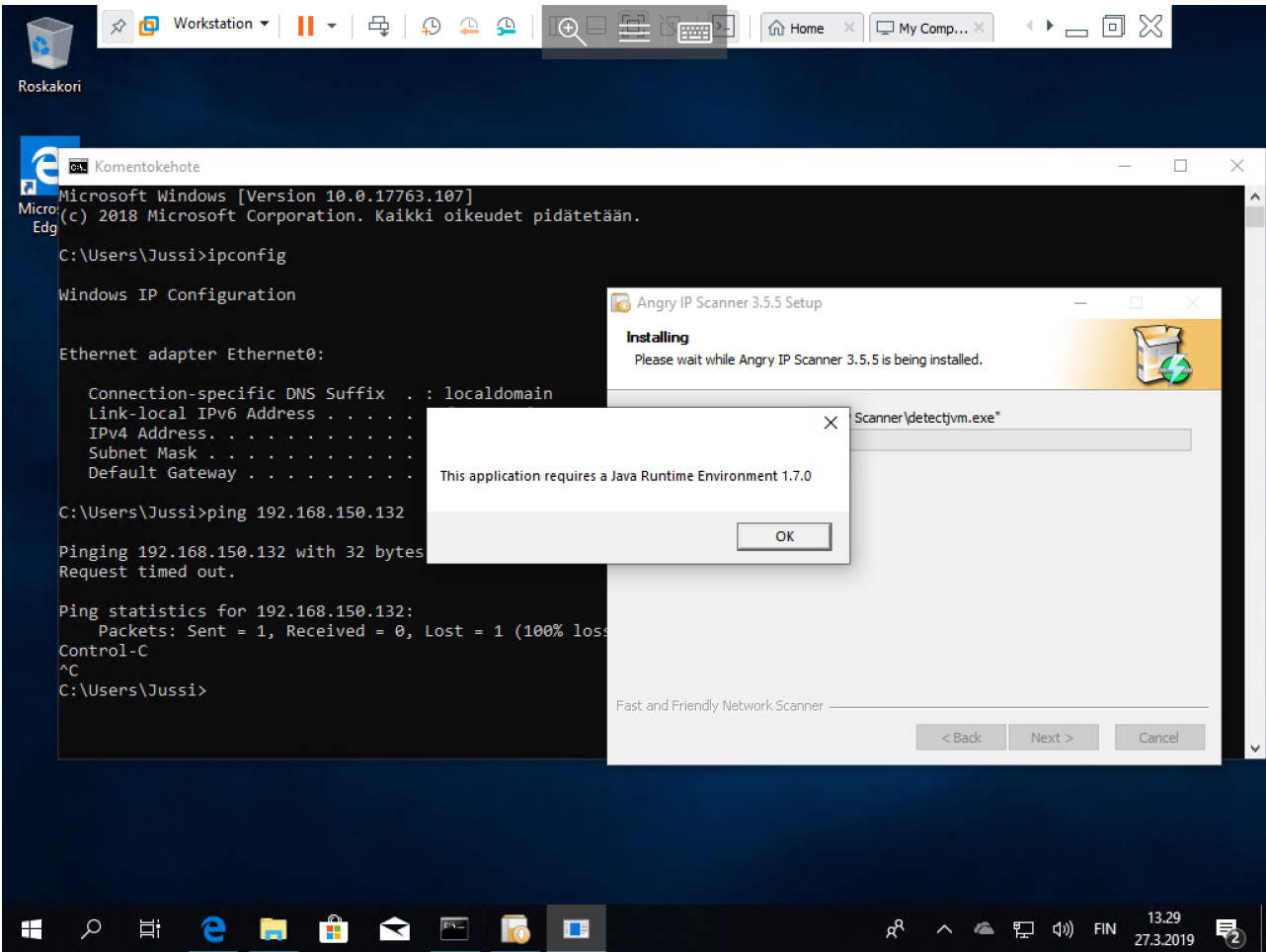
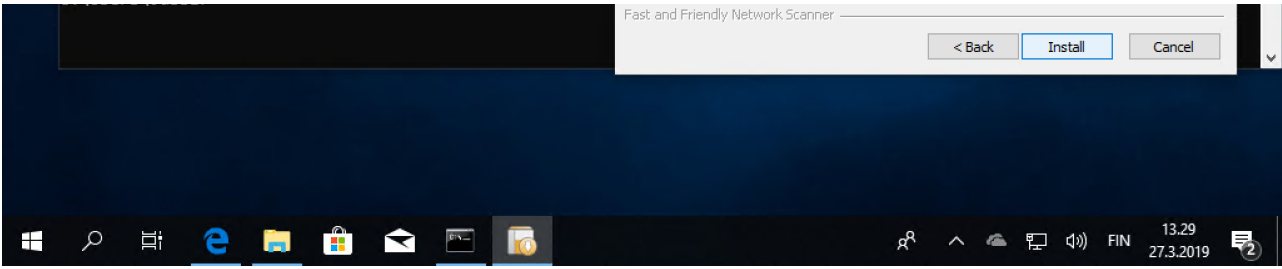
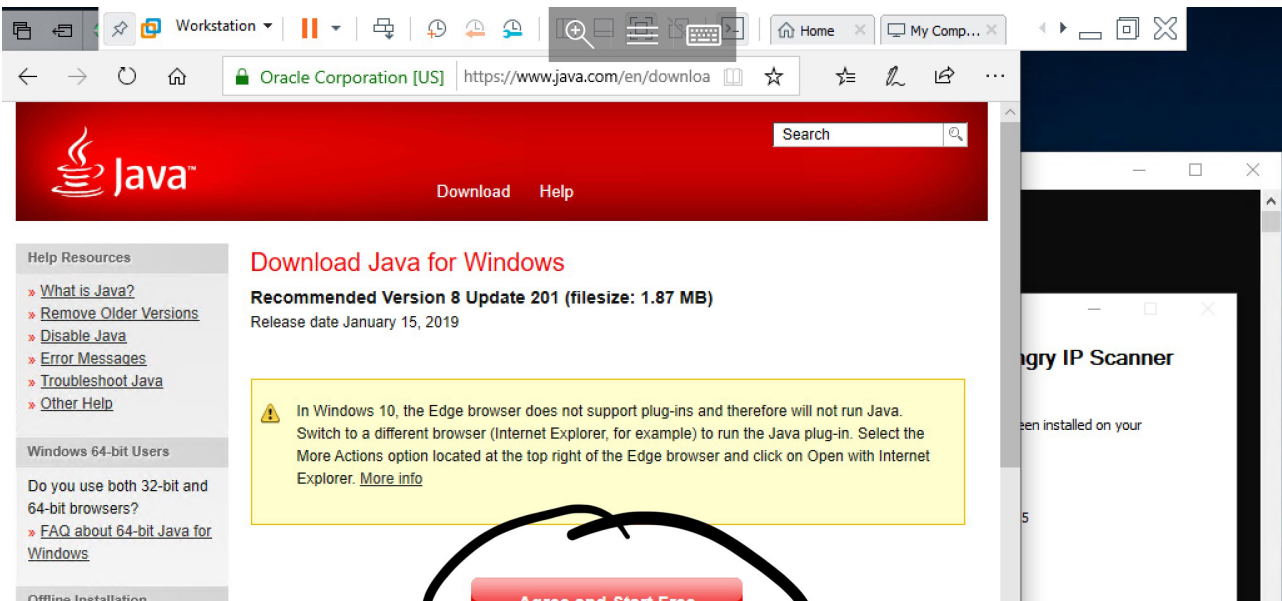
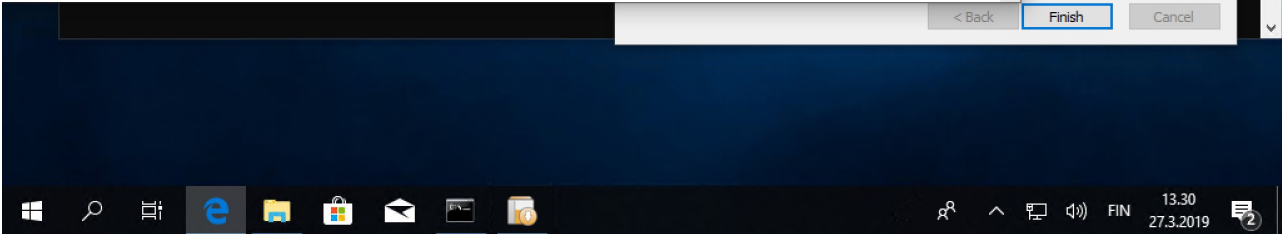
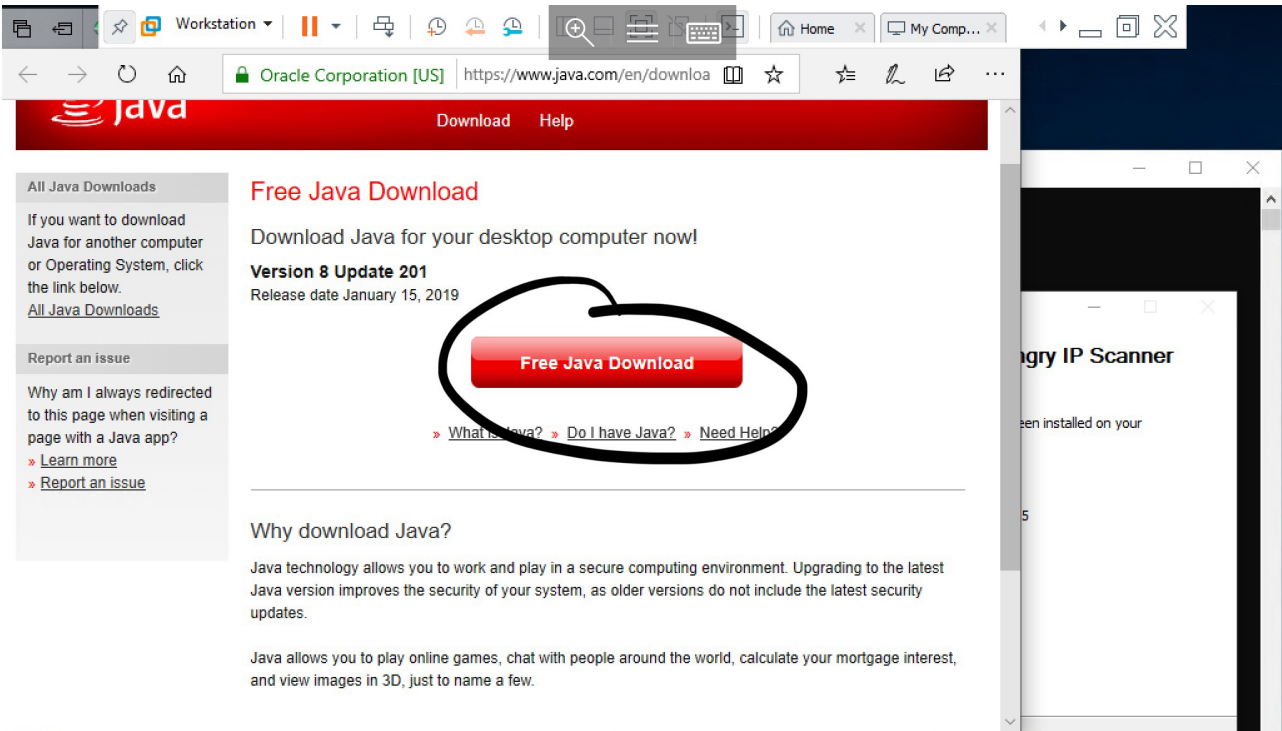
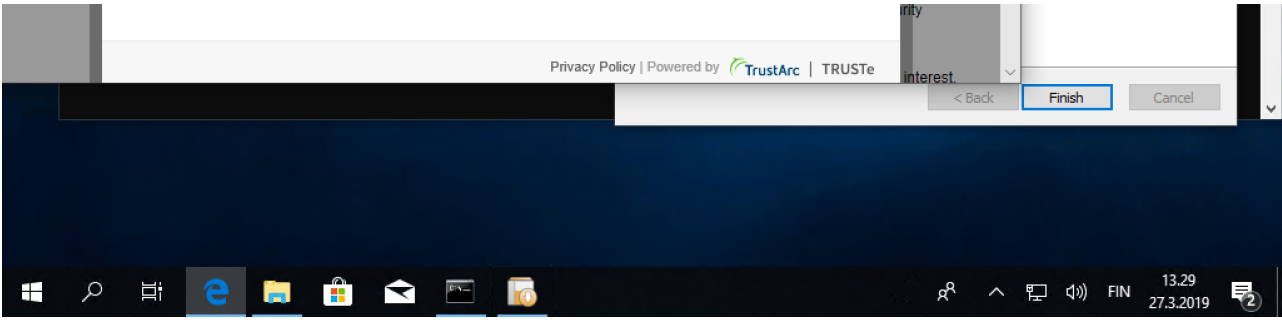


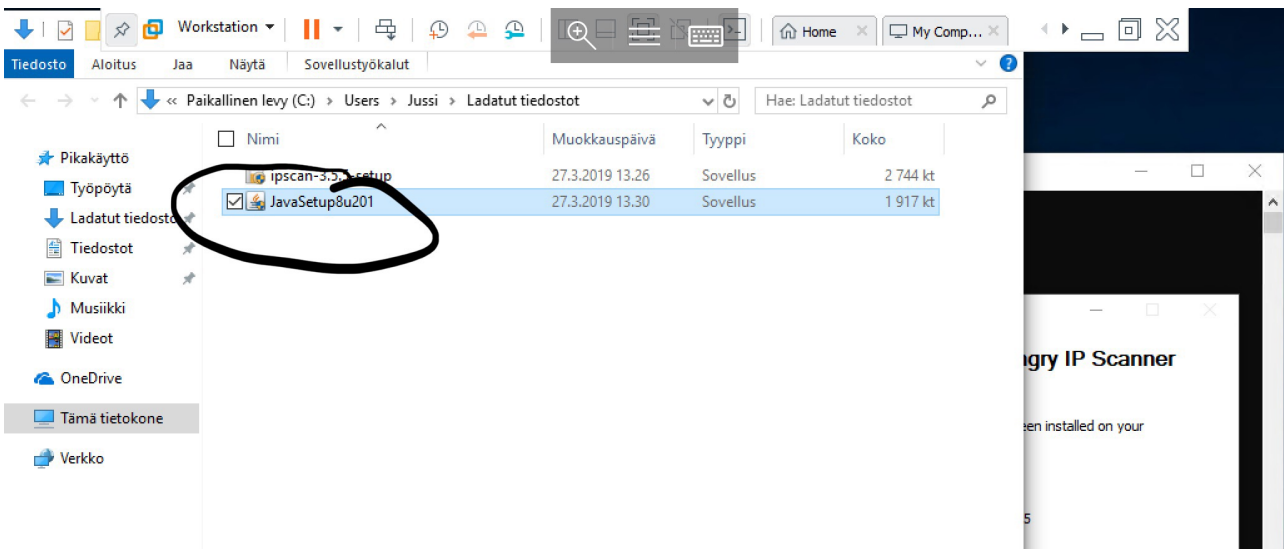
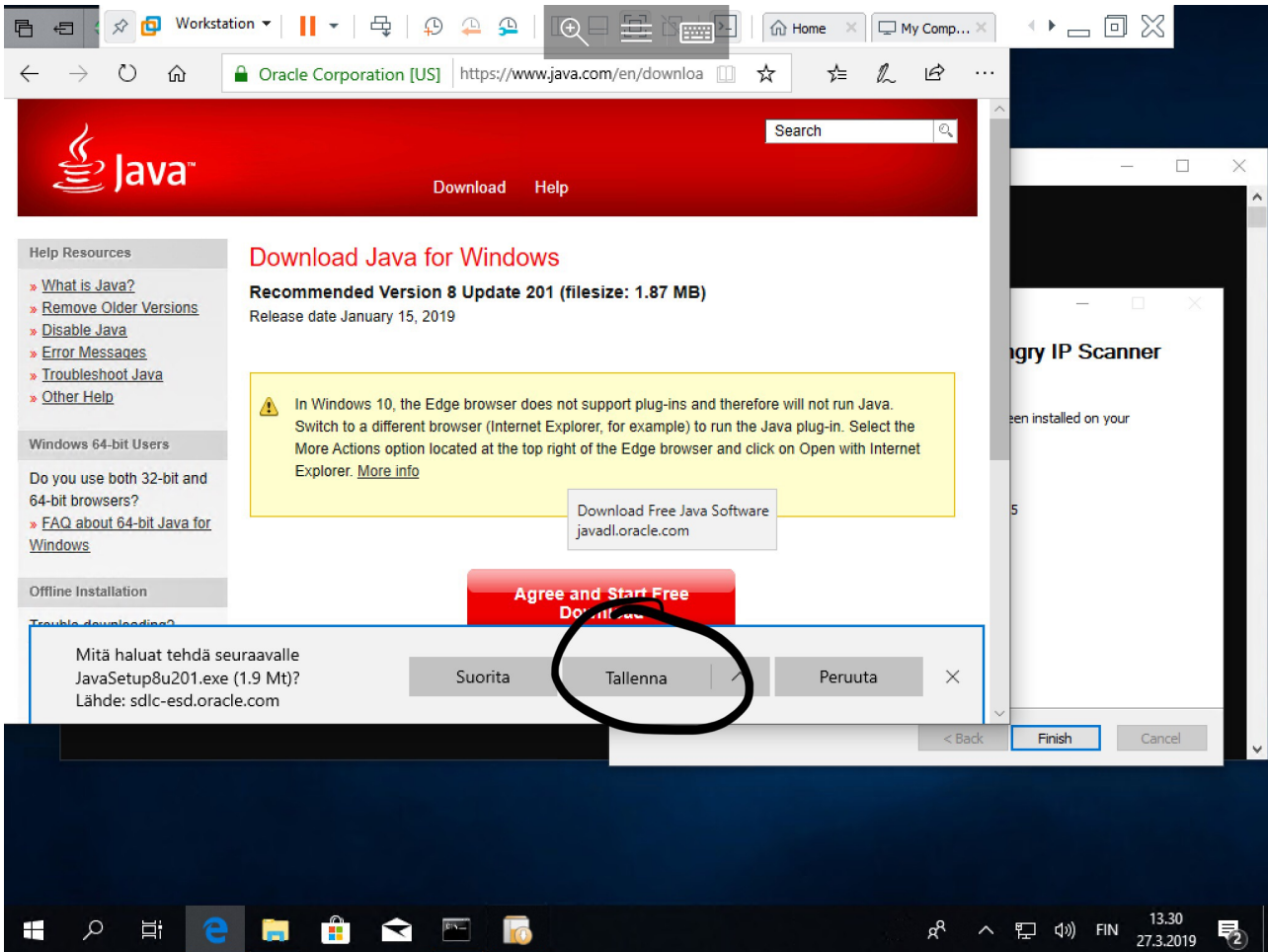
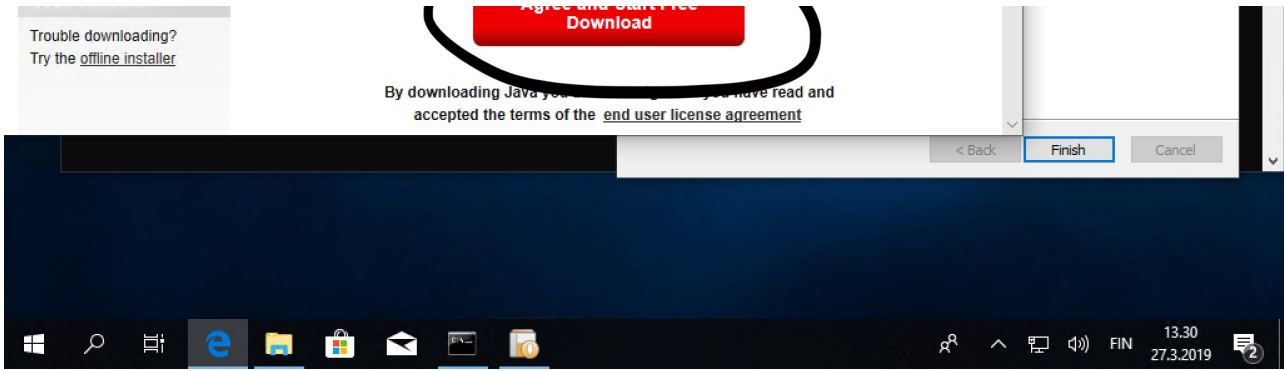
Asenna Angry IP scanner virtuaalikoneelle -> testataan NAT-verkko)

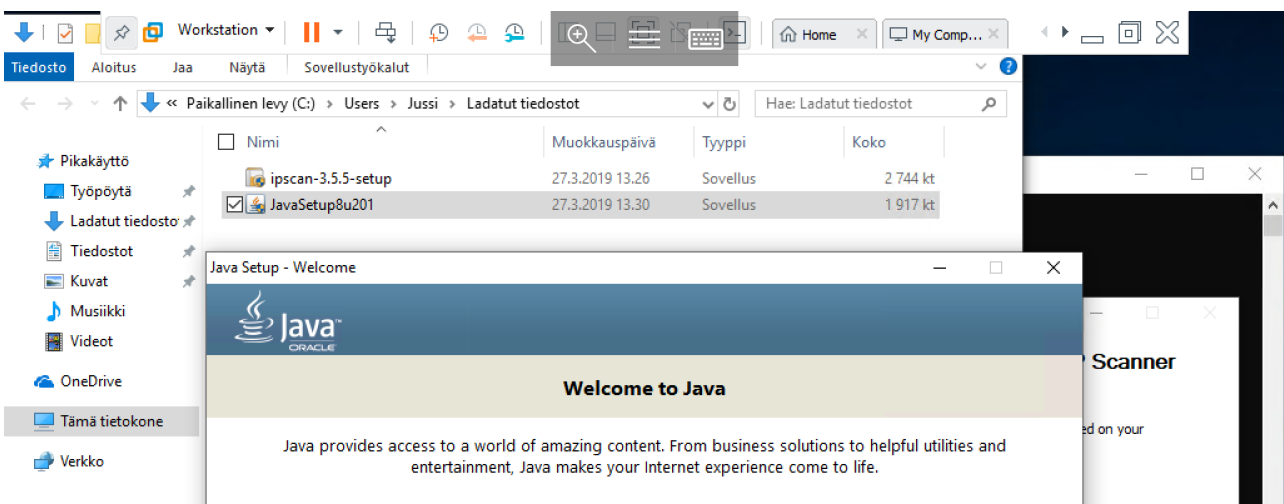
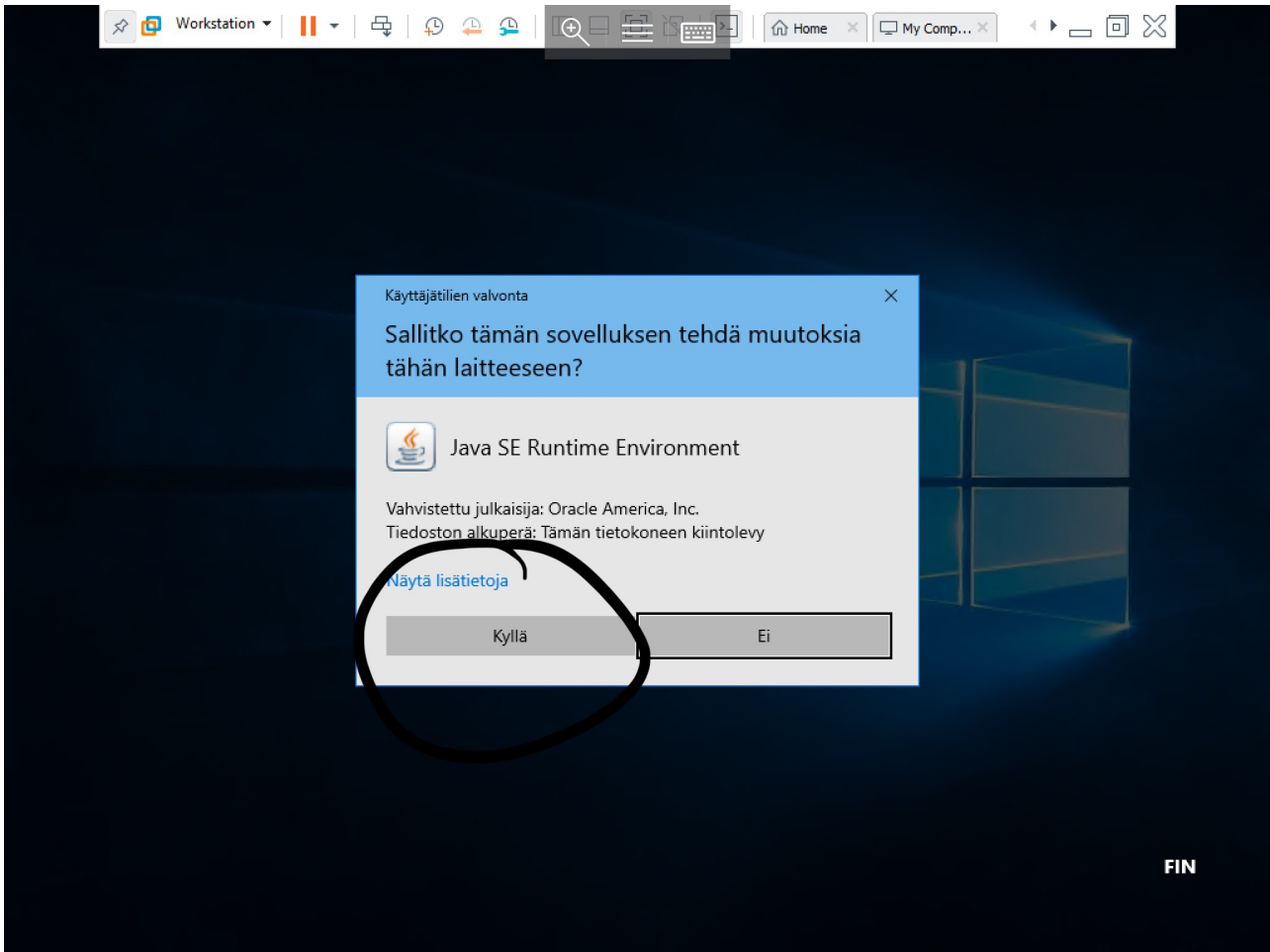
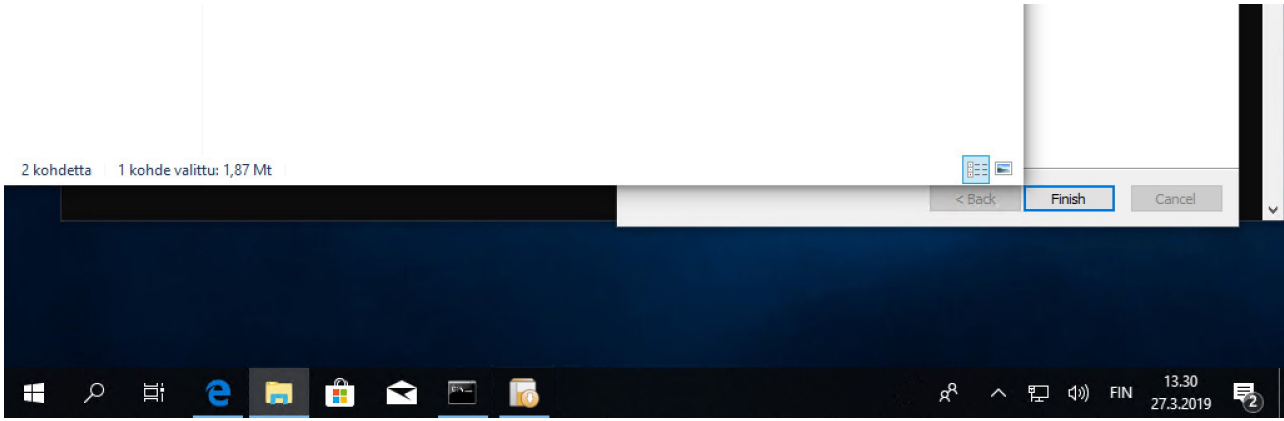
keskiviikko 27. maaliskuuta 2019 13.35











Note: No personal information is gathered as part of our install process. [Click here](#) for more information on what we do collect.

Click Install to accept the [license agreement](#) and install Java now.

Change destination folder

Cancel

Install >

< Back

Finish

Cancel

2 kohdetta | 1 kohde valittu

Workstation | Home | My Comp... | Tiedosto | Aloitus | Jaa | Näytä | Sovellustyökalut

Paikallinen levy (C:) > Users > Jussi > Ladatut tiedostot

Nimi	Muokauspäivä	Tyyppi	Koko
ipscan-3.5.5-setup	27.3.2019 13.26	Sovellus	2 744 kt
<input checked="" type="checkbox"/> JavaSetup8u201	27.3.2019 13.30	Sovellus	1 917 kt

Change in License Terms

Important Information about Oracle Java SE Roadmap

Changes are coming which will impact your access to future releases of Java SE from Oracle.

Corporate users will be impacted with the April 2019 update.

These changes do not affect the version you are about to install.

For additional guidance please follow the link below.

[More information...](#)

OK

2 kohdetta | 1 kohde valittu

13.30 27.3.2019

Oracle Corporation [US] | https://www.java.com/en/download

Java™ | Search | Download | Help

Help Resources

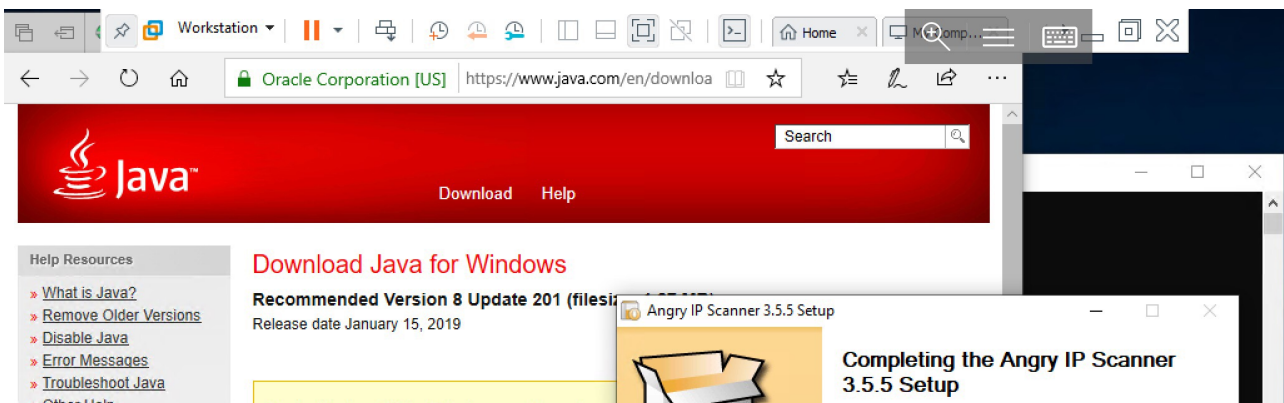
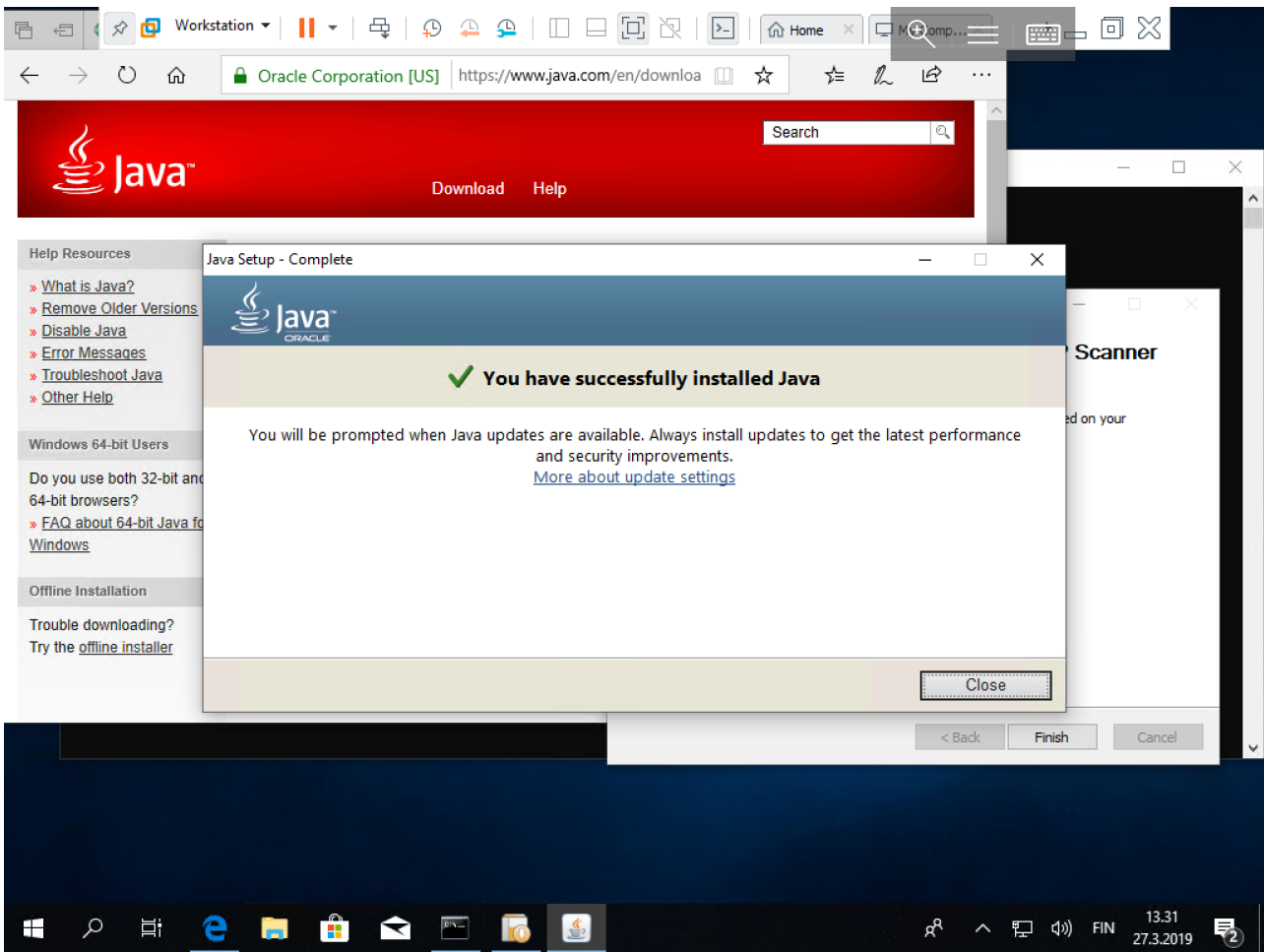
- What is Java?
- Remove Older Versions
- Disable Java
- Error Messages
- Troubleshoot Java
- Other Help

Windows 64-bit Users

Java Setup - Progress

Status: Installing Java

ATMs, Smartcards, POS terminals, Blu-ray Players, PCs



Windows 64-bit Users

Do you use both 32-bit and 64-bit browsers?
[FAQ about 64-bit Java for Windows](#)

Offline Installation

Trouble downloading?
 Try the [offline installer](#)

Agree and Down

By downloading Java you acknowledge and accept the terms of the license.

In Windows 10, the Edge browser does not support Java. Switch to a different browser (Internet Explorer, Firefox, or Google Chrome). More Actions option located at the top right of the browser.

Angry IP Scanner 3.5.5 has been installed on your computer.
 Click Finish to close Setup.

Run Angry IP Scanner 3.5.5

< Back Finish Cancel

13.31 27.3.2019

79% - IP R Workstation

Scan Go to Commands Favorites Tools Help

IP Range: 192.168.150.0 to 192.168.150.255 IP Range

Hostname: DESKTOP-BR5U27A IP Netmask Stop

IP	Ping	Hostname	Ports [0+]
192.168.150.1	[n/a]	[n/s]	[n/s]
192.168.150.2	0 ms	DC1	[n/s]
192.168.150.3	[n/a]	[n/s]	[n/s]
192.168.150.4	[n/a]	[n/s]	[n/s]
192.168.150.5	[n/a]	[n/s]	[n/s]
192.168.150.6	[n/a]	[n/s]	[n/s]
192.168.150.7	[n/a]	[n/s]	[n/s]
192.168.150.8	[n/a]	[n/s]	[n/s]
192.168.150.9	[n/a]	[n/s]	[n/s]
192.168.150.10	[n/a]	[n/s]	[n/s]
192.168.150.11	[n/a]	[n/s]	[n/s]
192.168.150.12	[n/a]	[n/s]	[n/s]
192.168.150.13	[n/a]	[n/s]	[n/s]
192.168.150.14	[n/a]	[n/s]	[n/s]
192.168.150.15	[n/a]	[n/s]	[n/s]
192.168.150.16	[n/a]	[n/s]	[n/s]
192.168.150.17	[n/a]	[n/s]	[n/s]
192.168.150.18	[n/a]	[n/s]	[n/s]
192.168.150.19	[n/a]	[n/s]	[n/s]
192.168.150.20	[n/a]	[n/s]	[n/s]
192.168.150.21	[n/a]	[n/s]	[n/s]
192.168.150.22	[n/a]	[n/s]	[n/s]
192.168.150.23	[n/a]	[n/s]	[n/s]
192.168.150.24	[n/a]	[n/s]	[n/s]
192.168.150.25	[n/a]	[n/s]	[n/s]
192.168.150.26	[n/a]	[n/s]	[n/s]
192.168.150.27	[n/a]	[n/s]	[n/s]
192.168.150.28	[n/a]	[n/s]	[n/s]
192.168.150.29	[n/a]	[n/s]	[n/s]
192.168.150.30	[n/a]	[n/s]	[n/s]

Started 192.168.150.202 Display: All Threads: 100 (max)

13.33 27.3.2019

